

How To Activate the NTP/PTP License on an E-Series Clock

This instructable applies to the following clock models:

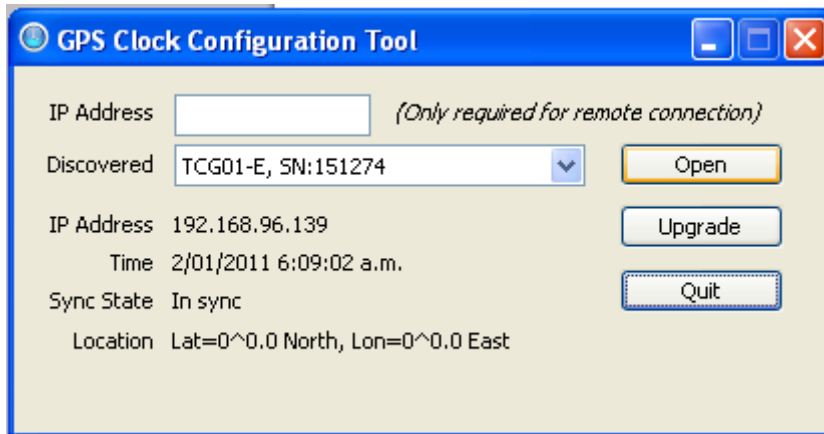
TCG 01-E

TCG 02-E

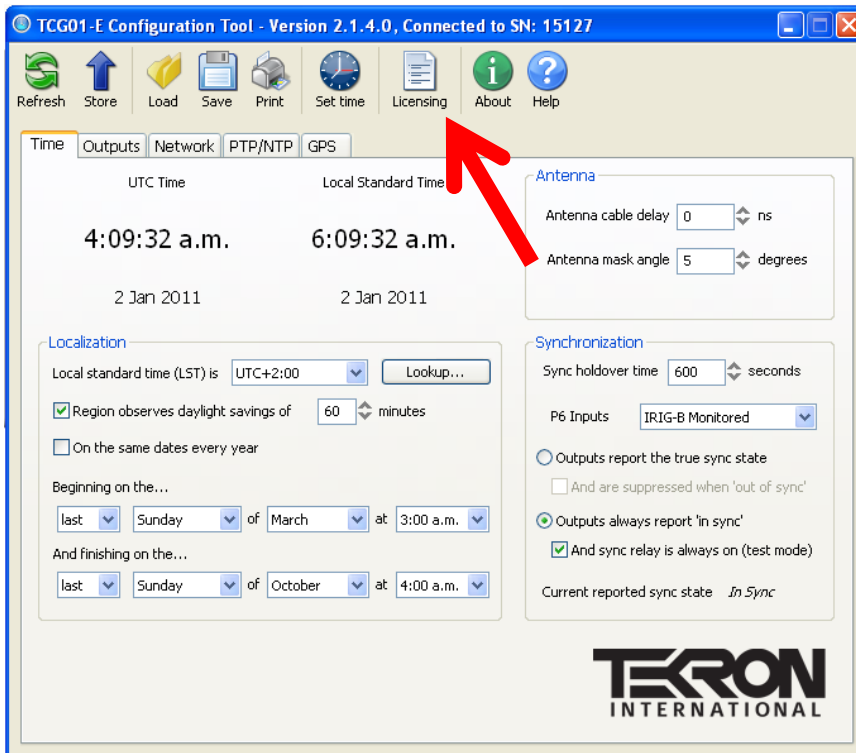
TTM 01-E

N1

1. Open the configuration tool, and select the clock in question.



2. Select the "Licensing" Button on the top menu bar, and paste the supplied license key into the box.



because timing is everything

Page | 1

3. Click the "Update License" Button. A message box will then show up, acknowledging that the key is correct. The NTP and/or PTP will now be enabled.

