

How to Activate a License using Configuration Tool II

This applies instructable applies to the following clock models:

TCG 01-G	TCG 02-G	NTS 02-E	NTS 02-G
NTS 03-E	NTS 03-G	TTM 01-G	TSC 100
NTS 100	TCG 01-E	TCG 02-E	TTM 01-E

1. Open the configuration tool, discover and select the clock you want to apply the license to.

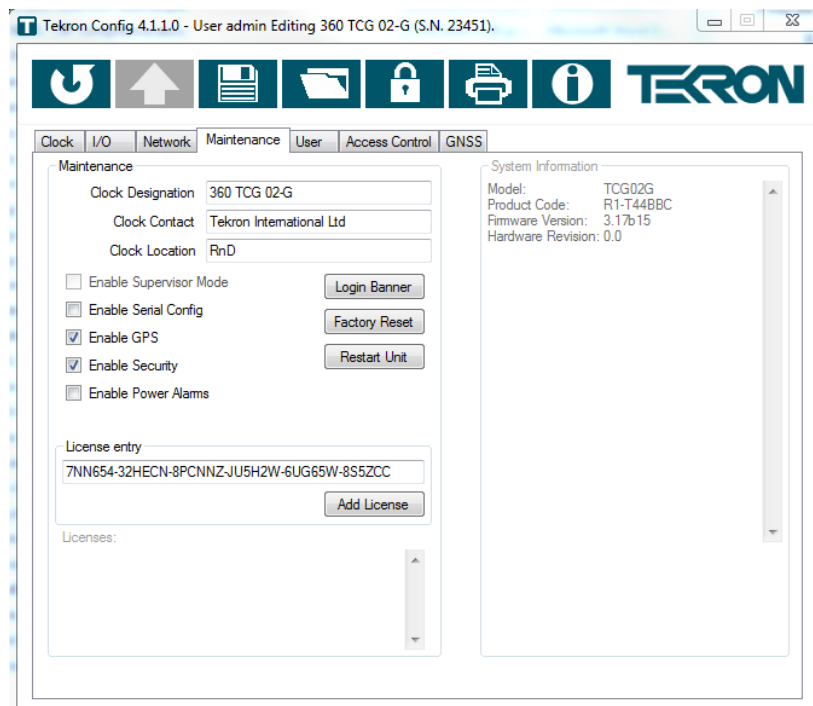


Figure 1 The maintenance tab of the configuration tool

2. Select the **Maintenance** tab (Figure 1) and paste the License key Tekron has supplied you into the **License Entry** field as in Figure 1.
3. Click the **Add License** button. The configuration tool will show a dialogue to advise that the license has been added.
4. When you close the dialogue, you should see the newly applied license listed under the **Licenses** list as in Figure 2.

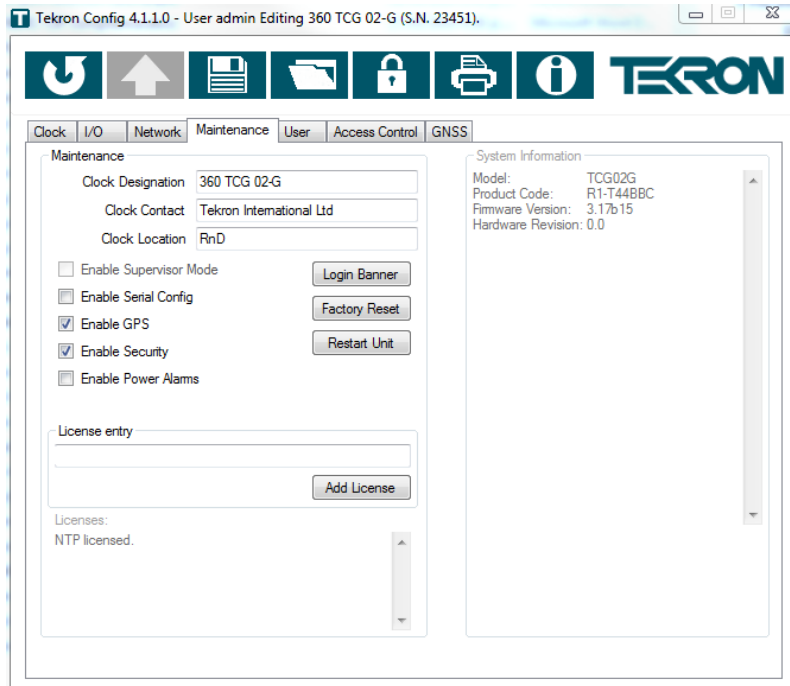


Figure 2. The maintenance tab when the license has been added.

5. Your clock is now ready to be used.