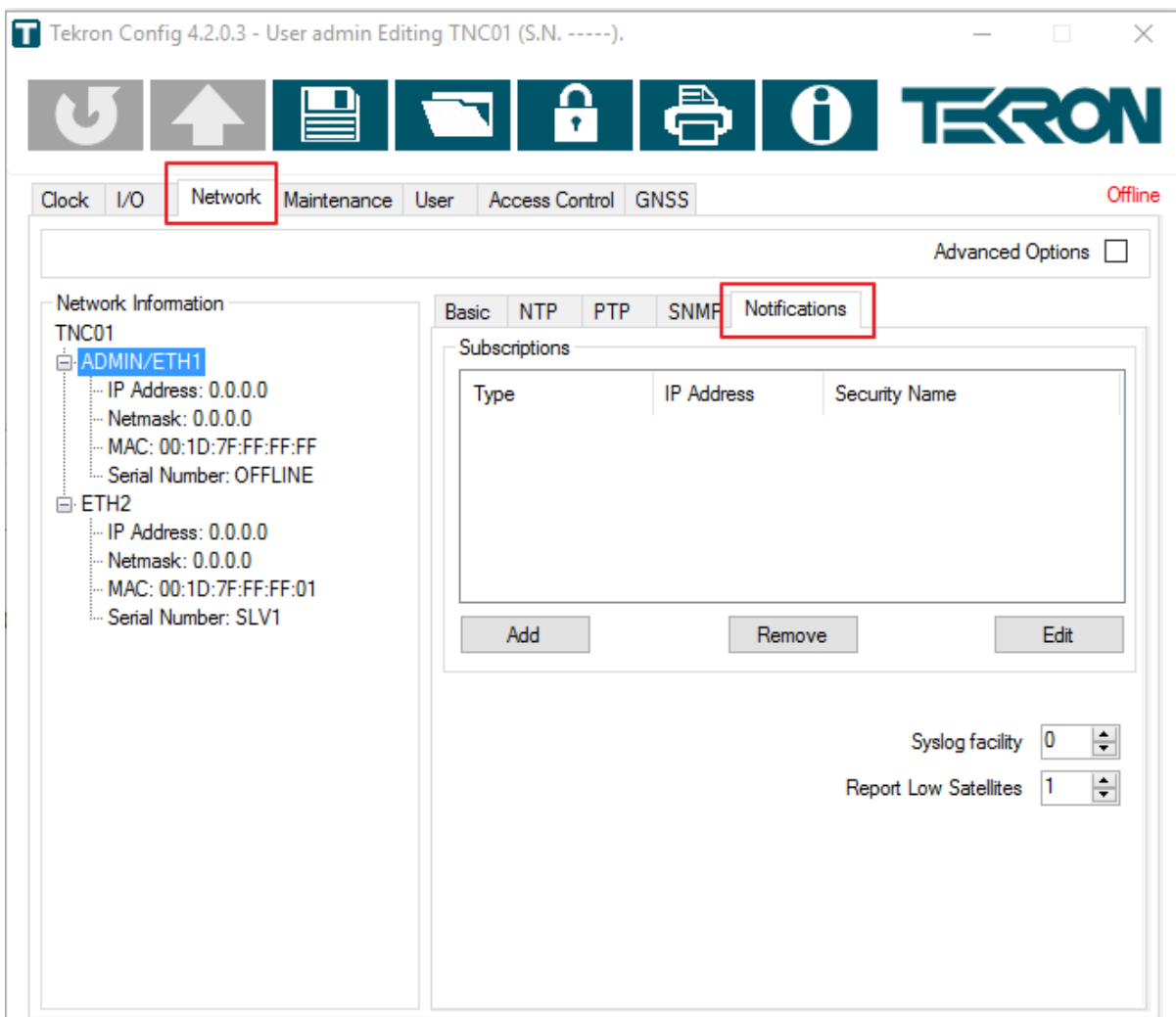
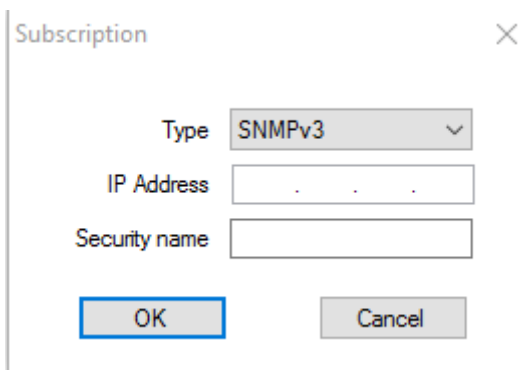


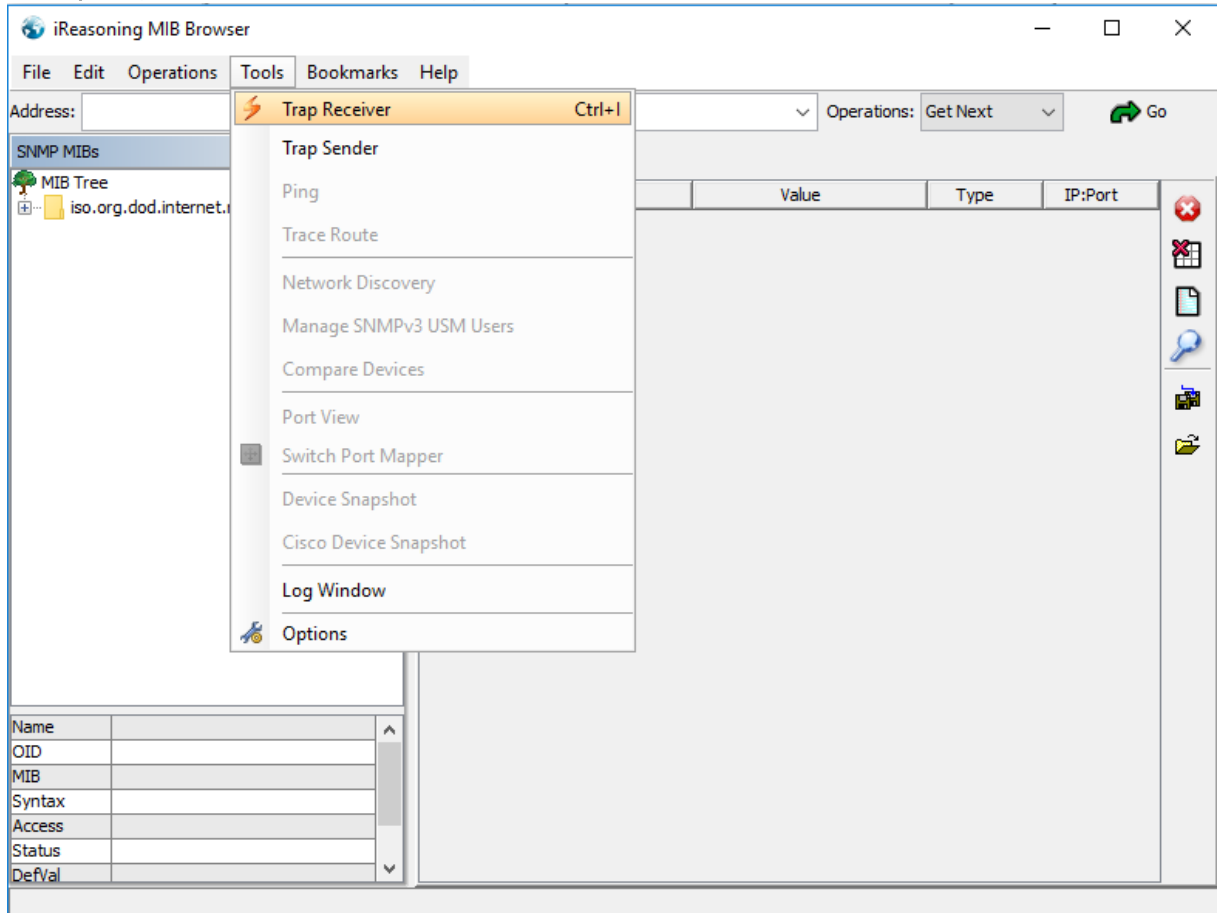
1. Connect to the admin port of the clock using the Ethernet configuration tool, and navigate to the Notifications tab under Network tab.



2. Press the Add button and select the settings:
 - Type: SNMPv3
 - IP Address: Your PC address found in step 1
 - Security Name: Leave blank
 - Press Ok to store the settings.



3. Repeat for Eth module 2.
4. Open up a SNMP browser.
 - o I use iReasoning MIB Browser (downloadable from: <http://www.ireasoning.com/download.shtml>)
5. Configure your browser to receive traps.



6. Test the traps are working by restarting the clock. You should see a cold start trap appear when the clock turns on.
7. When finished, save the SNMP logs

