

Serial upgrade procedure: TCGXX-E & TCGXX-G

This upgrade process applies to the following:

Clock Hardware Revision	Your Current Firmware Revision	Latest Firmware Revision
TCGXX-G	F:2.XX	F:2.25r2
TCGXX-E	F:1.00 and above	F:2.25r2
TCGXX-E	E:1.00 and above	E:1.13
TCGXX	D:09.001 and above	D:10.13

WARNING: Please double check that your current firmware version matches the above table. If you are unsure please contact support@tekroninternational.com, we will get back to you within 1 working day.

Pre-update requirements

You will require the following:

- PC with a Windows operating system (2000, XP, Vista or Windows 7).
- A PC with a **BUILT IN SERIAL PORT. DO NOT USE A USB TO SERIAL CONVERTER.**
- Power supply rated at the recommended voltage for the unit.
- DCE Serial Cable

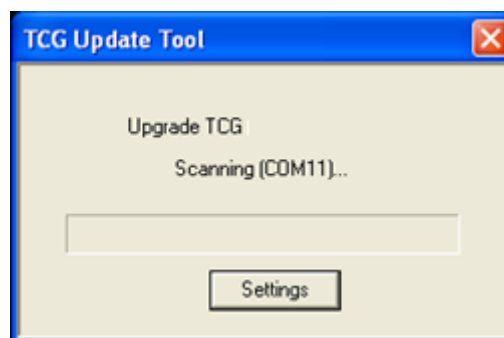
Serial upgrade procedure

DO NOT USE A USB TO SERIAL CONVERTER TO COMPLETE THIS UPGRADE.

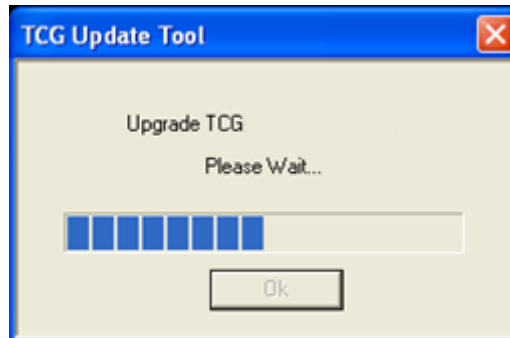
1. Disconnect power and then disconnect all outputs and the antenna from the unit.
2. Plug the unit into your PC using a DCE Serial cable.
3. Plug in the power.
4. Open The serial upgrade application.
5. The tool will automatically scan the PC's COM ports, until it identifies the connected clock.

NOTE: If the tool scans for more than 1 minute, without finding a clock, please check the following:

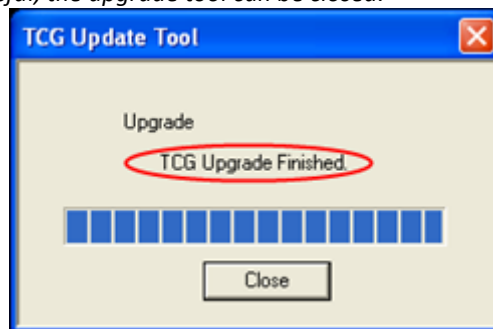
- a. That the TCG is powered up, and the LEDs on the front panel are flashing
- b. That a DCE serial cable is plugged into the TCG that is being upgraded
- c. Finally, close the upgrade tool, and power cycle the unit, before trying again.



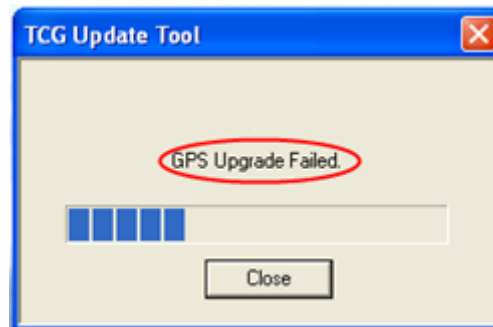
6. Click "OK" to begin the update process.



7. The upgrade tool should start uploading the new firmware to the clock. Please **DO NOT UNPLUG THE CLOCK FROM THE PC UNTIL THE UPGRADE HAS BEEN COMPLETED**.
8. If the firmware upgrade is successful, the upgrade tool will remain open, and report "TCG Upgrade Finished".
9. Once the upgrade is successful, the upgrade tool can be closed.



10. **UPGRADE FAILED:** If the upgrade tool reports "Upgrade Failed" at any step, please complete the following:



- a. Click the "Close" button on the TCG Update Tool
- b. Power cycle the clock, and wait for it to reboot.
- c. Re open the Upgrade tool, and complete steps 1 through 8.
- d. If the LCD display is blank, due to a partial upgrade, the upgrade tool may fail to automatically detect the correct com port. The correct com port will need to manually selected when the settings menu appears.
- e. If the upgrade continually fails, please contact **Tekron** for further assistance.